

MONTHLY MEMBERSHIP PROGRESS REPORT

LOCATION WASHINGTON

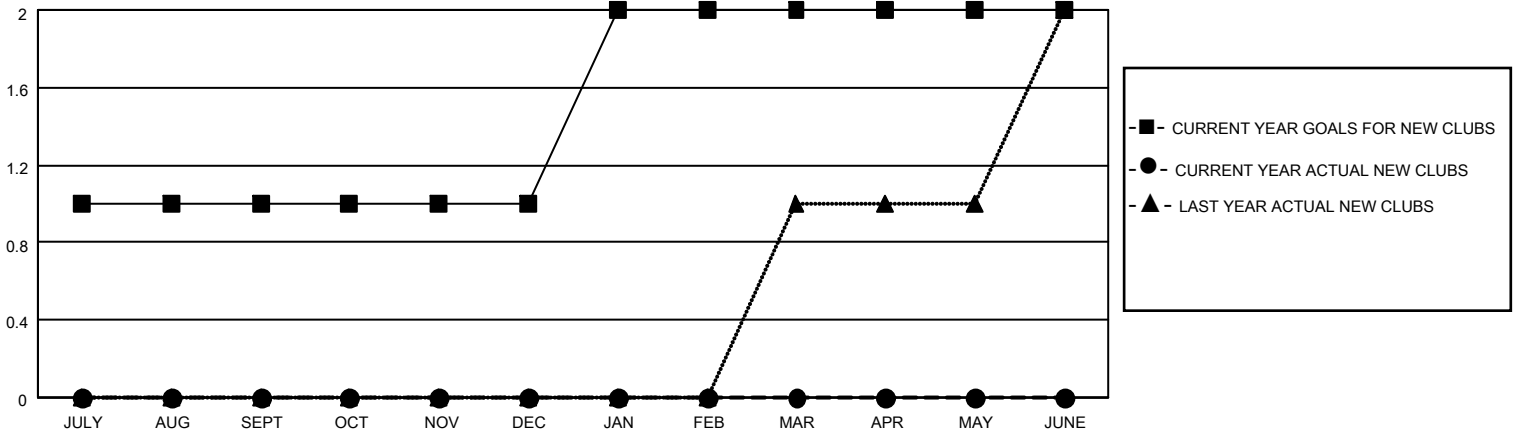
District 19 I

Results as of: 5/31/2021

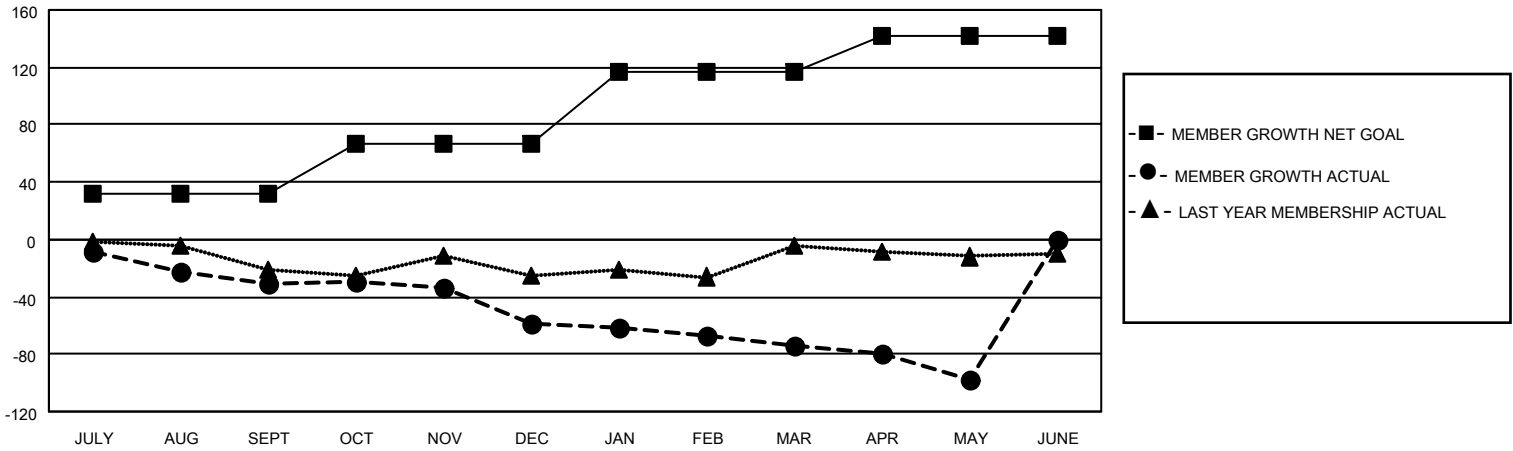
Clubs			
RESULTS FOR 2020-2021			
QUARTER	NEW CLUB GOAL	NEW CLUBS	DROPPED CLUBS
JULY/AUG/SEPT	1	0	0
OCT/NOV/DEC	0	0	0
JAN/FEB/MAR	1	0	1
APR/MAY/JUNE	0	0	0

Members			
RESULTS FOR 2020-2021			
QUARTER	MEMBER GROWTH NET GOAL	MEMBER GROWTH ACTUAL	DROPPED MEMBERS ACTUAL (including transfers)
JULY/AUG/SEPT	32	4	35
OCT/NOV/DEC	35	28	51
JAN/FEB/MAR	50	14	23
APR/MAY/JUNE	25	25	36

GOALS AND ACTUAL NEW CLUBS CUMULATIVE



GOALS AND ACTUAL MEMBERS CUMULATIVE



DROPPED CLUBS: 1	
DROPPED MEMBERS	
DECEASED	19
CLUB CANCELLED	0
OTHER	126
TOTAL	145

20 CLUBS OF 50 ADDED 1 OR MORE NEW MEMBERS

[CLICK HERE FOR CUMULATIVE MEMBERSHIP DATA](#)

<u>GENDER DISTRIBUTION</u>	
MALE	703 (61.13%)
FEMALE	447 (38.87%)

TOTAL FAMILY UNIT MEMBERS	221
FAMILY MEMBERS PAYING HALF DUES	111